

BOWLERS MILL
RESERVOIR

ZION
CROSSROADS



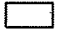
FERNCLIFF

LOUISA INDUSTRIAL
AIR PARK

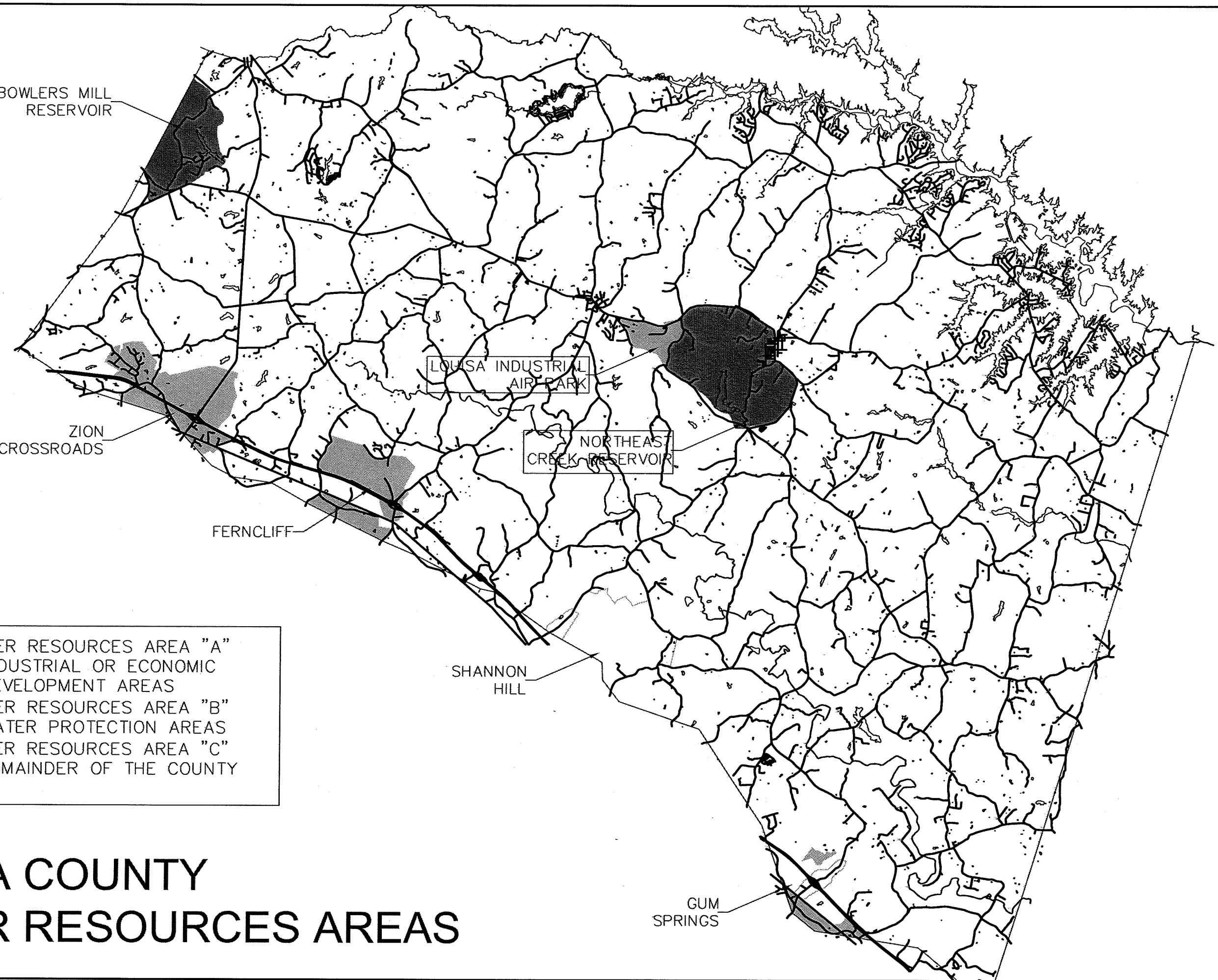
NORTHEAST
CREEK RESERVOIR

SHANNON
HILL

GUM
SPRINGS

 WATER RESOURCES AREA "A"
INDUSTRIAL OR ECONOMIC
DEVELOPMENT AREAS
 WATER RESOURCES AREA "B"
WATER PROTECTION AREAS
 WATER RESOURCES AREA "C"
REMAINDER OF THE COUNTY

LOUISA COUNTY WATER RESOURCES AREAS



TIMMONS
Founded
1958

ENGINEERS • ARCHITECTS • SURVEYORS • LANDSCAPE ARCHITECTS • ENVIRONMENTAL SCIENTISTS • GEOGRAPHIC INFORMATION SYSTEMS CONSULTANTS • CONSTRUCTION MANAGERS
LOUISA CO. STORMWATER ORDINANCE
OVERALL WATER RESOURCES AREA MAP

CORPORATE HEADQUARTERS: 1000 N. W. 10th St., Ft. Lauderdale, FL 33304-4007
BIRMINGHAM OFFICE: 1000 N. W. 10th St., Ft. Lauderdale, FL 33304-4007
MEMPHIS OFFICE: 1000 N. W. 10th St., Ft. Lauderdale, FL 33304-4007
NORFOLK OFFICE: 1000 N. W. 10th St., Ft. Lauderdale, FL 33304-4007
RICHMOND OFFICE: 1000 N. W. 10th St., Ft. Lauderdale, FL 33304-4007
TAMPA OFFICE: 1000 N. W. 10th St., Ft. Lauderdale, FL 33304-4007
TULSA OFFICE: 1000 N. W. 10th St., Ft. Lauderdale, FL 33304-4007
WASHINGTON, DC OFFICE: 1000 N. W. 10th St., Ft. Lauderdale, FL 33304-4007
WICHITA OFFICE: 1000 N. W. 10th St., Ft. Lauderdale, FL 33304-4007
WYOMING OFFICE: 1000 N. W. 10th St., Ft. Lauderdale, FL 33304-4007

REVISION DESCRIPTION	DATE
	2/25/02
DRAWN BY	D.ARRINGTON
DESIGNED BY	D.MAXWELL
CHECKED BY	D.MAXWELL
SCALE	1" = 15,000'

SHEET NO.
1 OF 1
JOB NO.
19394