

WILLIAM EDWARDS & ASSOCIATES, INC.  
 1700 COMMONWEALTH AVENUE, SUITE 200  
 FARMINGTON, CT 06030

THE WOODWARD  
 1700 COMMONWEALTH AVENUE, SUITE 200  
 FARMINGTON, CT 06030

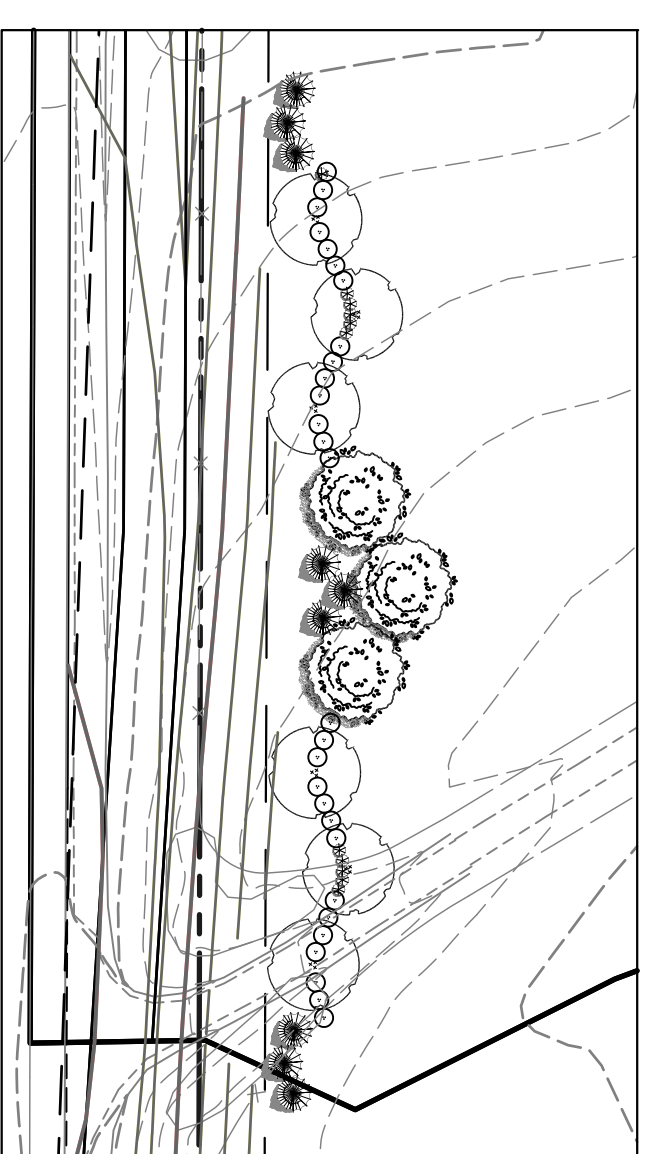
WILLIE BENTLEY  
 1700 COMMONWEALTH AVENUE, SUITE 200  
 FARMINGTON, CT 06030

FRANK A. HARRIS  
 1700 COMMONWEALTH AVENUE, SUITE 200  
 FARMINGTON, CT 06030

CLARENCE A. HARRIS  
 1700 COMMONWEALTH AVENUE, SUITE 200  
 FARMINGTON, CT 06030




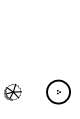


**Route 250 Streetscape Planting Concept:**



\*This type of planting scheme will be implemented intermittently along Route 250.

**LEGEND:**

-  Large Deciduous Tree
-  Medium Evergreen Tree
-  Medium Deciduous Shrub
-  Small Evergreen Shrub

All rights reserved. No part of the material protected by this copyright notice may be reproduced, stored in a retrieval system, or transmitted in any form or by any means, electronic or mechanical, including photocopying, recording, or by any information storage and retrieval system, without written permission from Bent Tree Design, P.C.  
 These plans may not be subject to a third party without the written consent of BENT TREE DESIGN, P.C.

SCALE: 1"=150'  
 ISSUED: 11.06.09  
 DRAWN BY: SEC  
 REVISIONS:  
 1. 3.04.10 AGENCY COMMENTS

**FERNCLIFF BUSINESS PARK**  
 LOUISA COUNTY, VIRGINIA  
**PRELIMINARY PLAT  
 LOT LAYOUT PLAN**

**BENT TREE DESIGN, PLC**  
 1700 COMMONWEALTH AVENUE, SUITE 200  
 FARMINGTON, CT 06030  
 434-230-2551



SHEET

**3**

J.N. 06/09 OF 3

