

TMS 36-12
 SPRING CREEK LAND
 DEVELOPMENT, LLC
 ZONED: RD

TMS 36-12

TMS 52-2
 HENRY LEE CARTER, TRUSTEE
 THE STRATTON LAND TRUST
 ZONED: A2

TMS 36-18
 REGINALD P.W.
 MURPHY
 STUART M.
 MURPHY
 ZONED: A1

TMS 368 (2) 11
 SPRING CREEK LAND
 DEVELOPMENT, LLC
 ZONED: RD

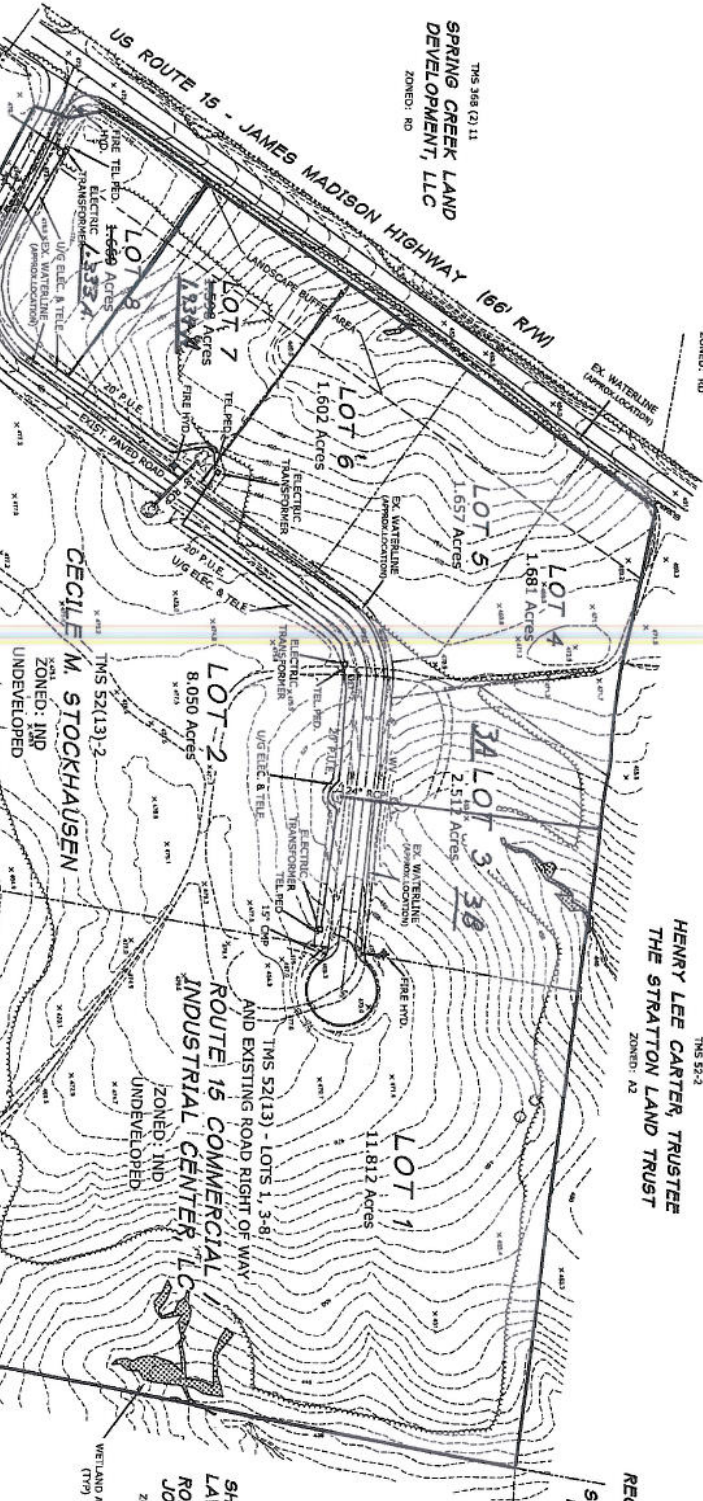
TMS 36-12

TMS 52(13) - LOTS 1, 3-8
 AND EXISTING ROAD RIGHT OF WAY

TMS 52-4
 SHEILA J.
 LAWRENCE
 ROBERT L.
 JOHNSON
 ZONED: A2

TMS 36-12B
 CARL FURRY ET ALS
 TRUSTEES OF CHRIST
 BAPTIST CHURCH
 ZONED: RD

TMS 52-11
 DAVID B. MORGAN
 MELANIE A. MORGAN
 ZONED: A2



TMS 52-10
 DAVID B. MORGAN
 MELANIE A. MORGAN
 ZONED: A2

TMS 36-18
 REGINALD P.W. MURPHY
 STUART M. MURPHY
 ZONED: A1

WETLAND AREA
 (TV9)

EXISTING CONDITIONS

SOMMERFIELD

LOUISA COUNTY, VIRGINIA

NOTES:
 FEDERAL JURISDICTIONAL WETLAND AREAS WERE DELINEATED BY WILLIAMS BELL ENVIRONMENTAL GROUP AND MAPPED BY BELL SURVEYS, INC.
 WETLAND AREAS HAVE BEEN CONFIRMED BY THE ARMY CORPS OF ENGINEERS.
 THE PROPERTY BOUNDARY IS BASED ON A FIELD SURVEY BY BELL SURVEYS, INC.
 TOPOGRAPHIC DATA SHOWN IS BASED ON A COMPOSITE OF AERIAL PHOTOGRAPHY AND MAPPING BY LOUISA AERIAL SURVEYS, AND ACTUAL FIELD SURVEY BY BELL SURVEYS, INC.



BELL SURVEYS, INC.
 Professional Land Surveying
 2000 W. WASHINGTON ST. SUITE 200
 CHARLOTTE, NC 28203
 LOUISA COUNTY, VIRGINIA
 LOUISA, VIRGINIA 22646 - PHONE: 800-867-4194

TERRA CONCEPTS, P.C.
 CIVIL ENGINEERS
 LANDMARK ARCHITECTS
 241 CONANT SQUARE
 SUITE 200
 CHARLOTTE, NC 28203

Dewberry
 Dawberry & Davis, Inc.
 ARCHITECTURAL DESIGN
 1000 W. WASHINGTON ST.
 SUITE 200
 CHARLOTTE, NC 28203



DATE: AUG. 15, 2007

SHEET 2 OF 7

1" = 170'